

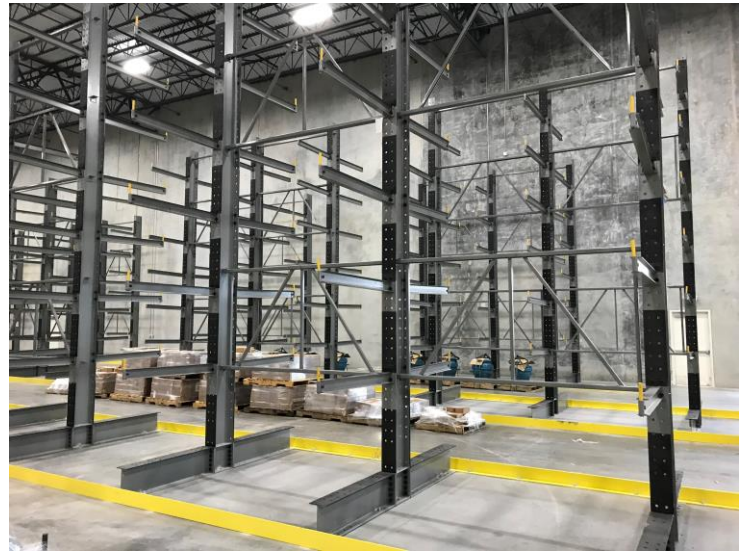


Cantilever Rack

Cantilever Rack is a storage solution that has load-bearing arms anchored by a large column at one end or in the center. Unlike most rack systems, this leaves the picking face unimpeded by structural elements. Cantilever Rack is ideal for long or bulky items such as furniture, appliances, flooring, lumber, tubing, textiles, and piping.

In addition to being able to store awkwardly shaped loads of various lengths, Cantilever Racks can be adjusted quickly and easily for varying heights. Add the ability to select from single or double-sided storage and accessories (such as decking) and the result is truly versatile storage.

Cantilever Rack



Cantilever Rack may be the solution to your warehouse problem if you:

- Need to store long, bulky or awkwardly shaped loads
- Require unobstructed access to your products
- Want to store loads of differing sizes in the same system
- Need high visibility of stored products

Available in light-, medium- and heavy-duty systems, cantilever is highly adaptable and can even include a roof option for out-of-doors storage. Because it is so customizable, a cantilever rack system must be carefully designed to meet your needs and protect your product and facility.

Talk to a DAK Project Manager to find out the best application for your system.



Call to Connect with a Project Manager
(630) 516-1115
projectmanager@dak-solutions.com
DAK-solutions.com